

* Vervet Monkey Density

November 2002



Legend

No./0.11km²

0

1-2

3-6

8-10

11-20

21-74

Not sampled (bush, inaccessible)

Reserve boundary

Mara count boundary

International boundary

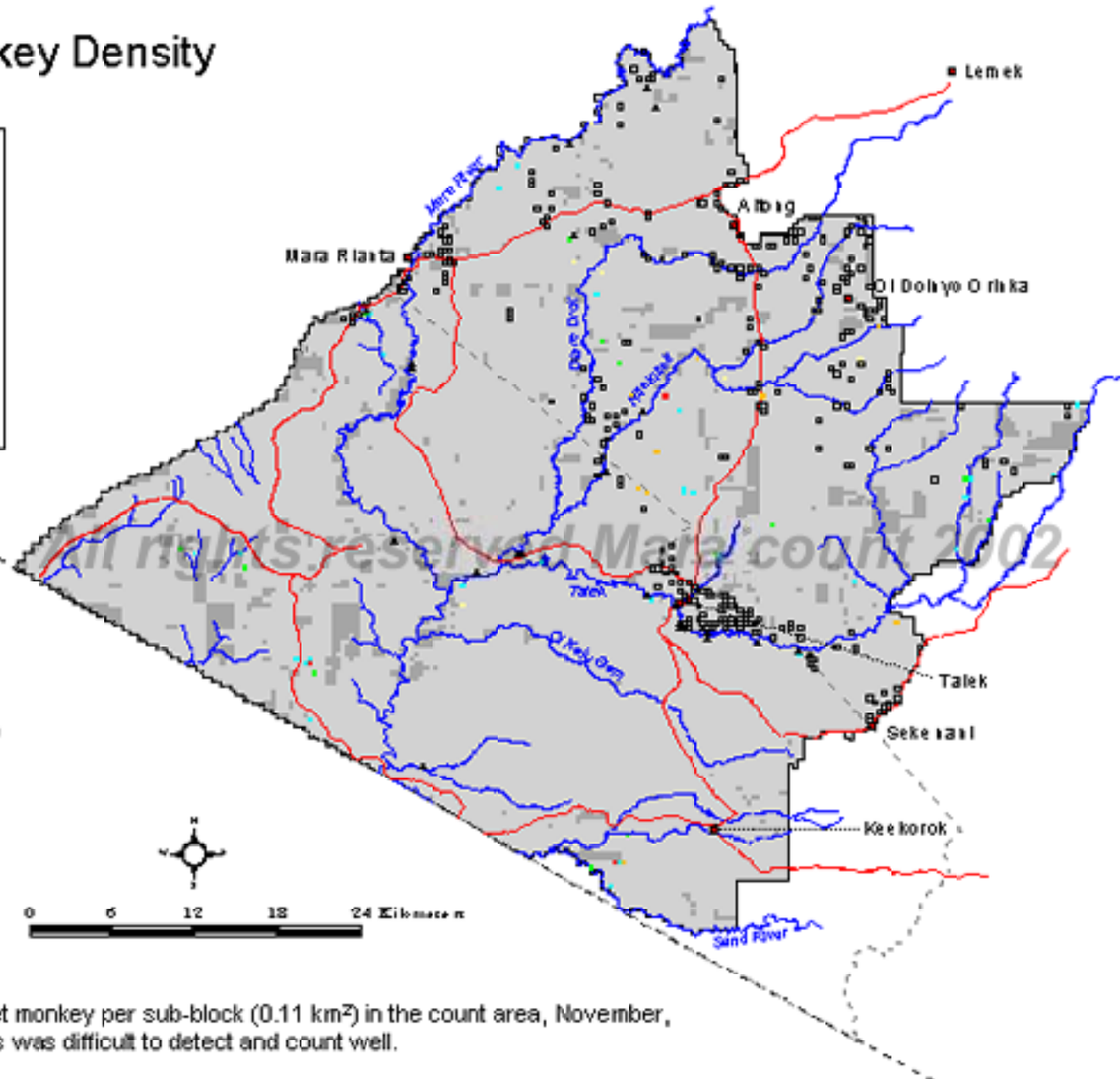
Roads

Rivers

Towns

Bomas

Lodges



Map 69. Number of vervet monkey per sub-block (0.11 km²) in the count area, November, 2002. * = species was difficult to detect and count well.