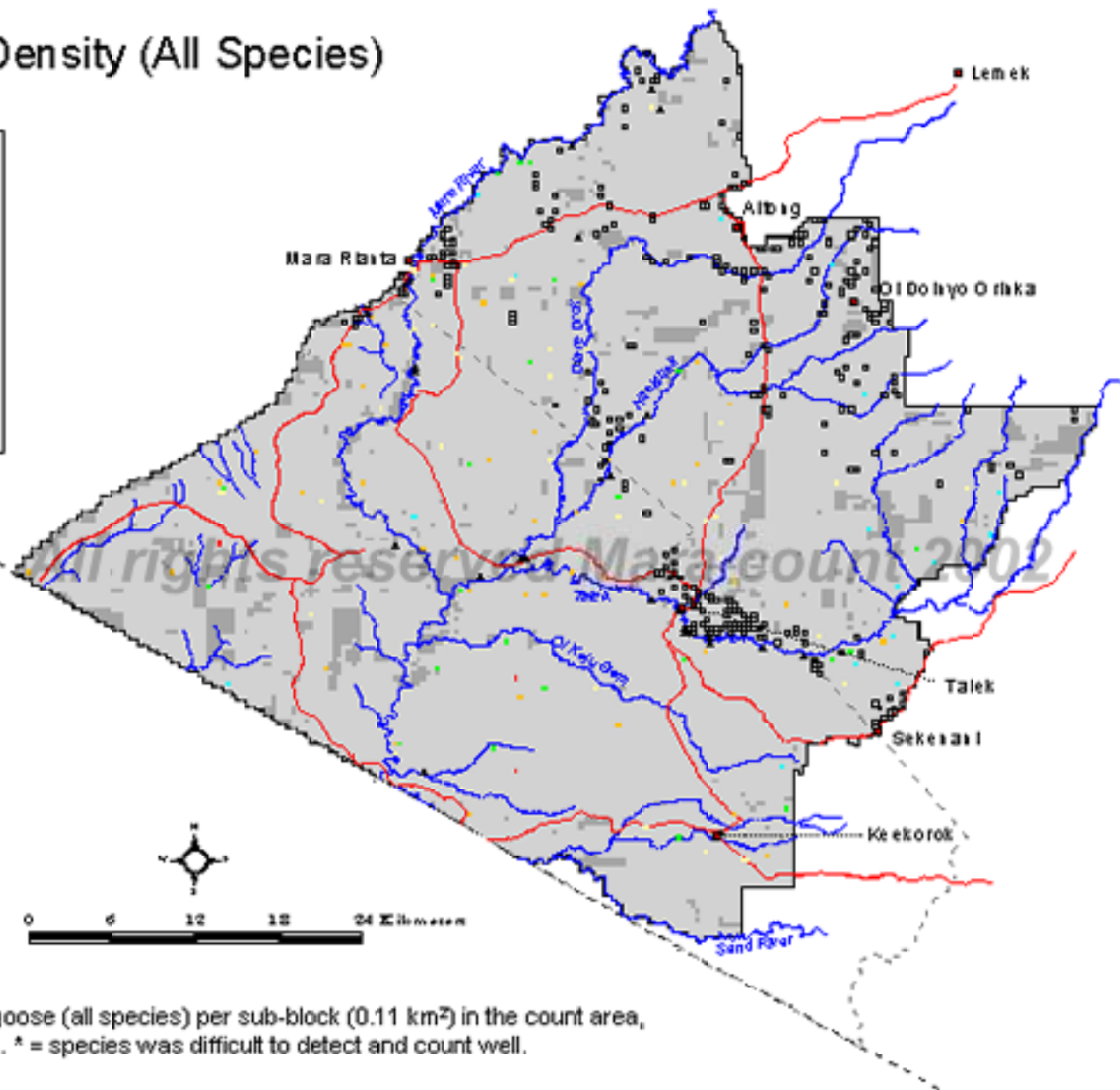


* Mongoose Density (All Species)

November 2002



- Legend**
- No./0.11km²
- 0
 - 1-2
 - 3-6
 - 8-10
 - 11-20
 - 21-27
 - Not sampled (rush, inaccessible)
 - Reserve boundary
 - Mara county boundary
 - International boundary
 - Roads
 - Rivers
 - Towns
 - Bomas
 - Lodges



Map 67. Number of mongoose (all species) per sub-block (0.11 km²) in the count area, November, 2002. * = species was difficult to detect and count well.