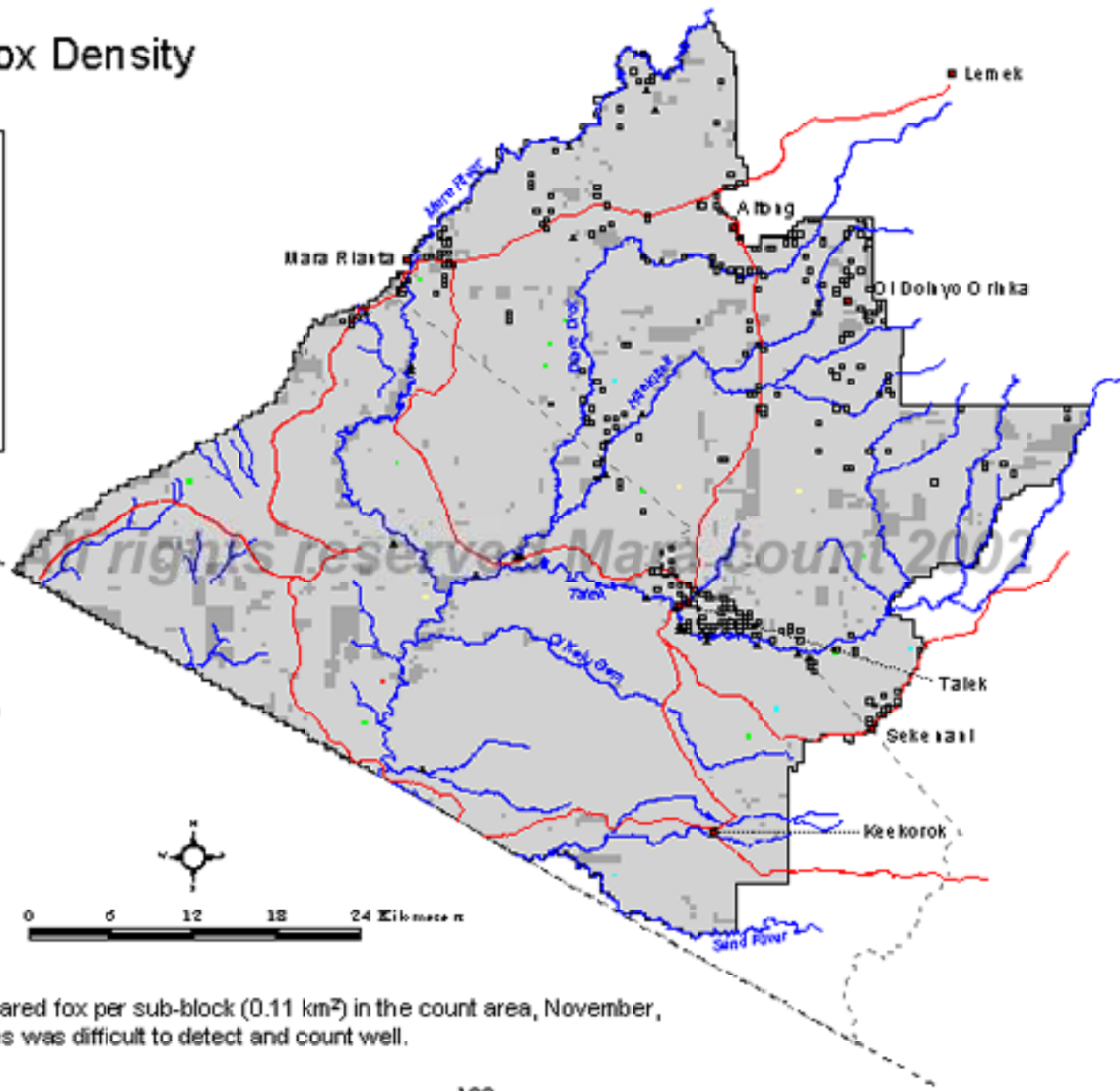


* Bat-eared Fox Density

November 2002



- Legend**
No./0.11km²
- 0
 - 1
 - 2
 - 3
 - 4
 - Not sampled (bush, inaccessible)
 - Reserve boundary
 - Mara county boundary
 - International boundary
 - Roads
 - Rivers
 - Towns
 - Shams
 - Lodges



Map 65. Number of bat-eared fox per sub-block (0.11 km²) in the count area, November, 2002. * = species was difficult to detect and count well.