

* Jackal Density (All Species)

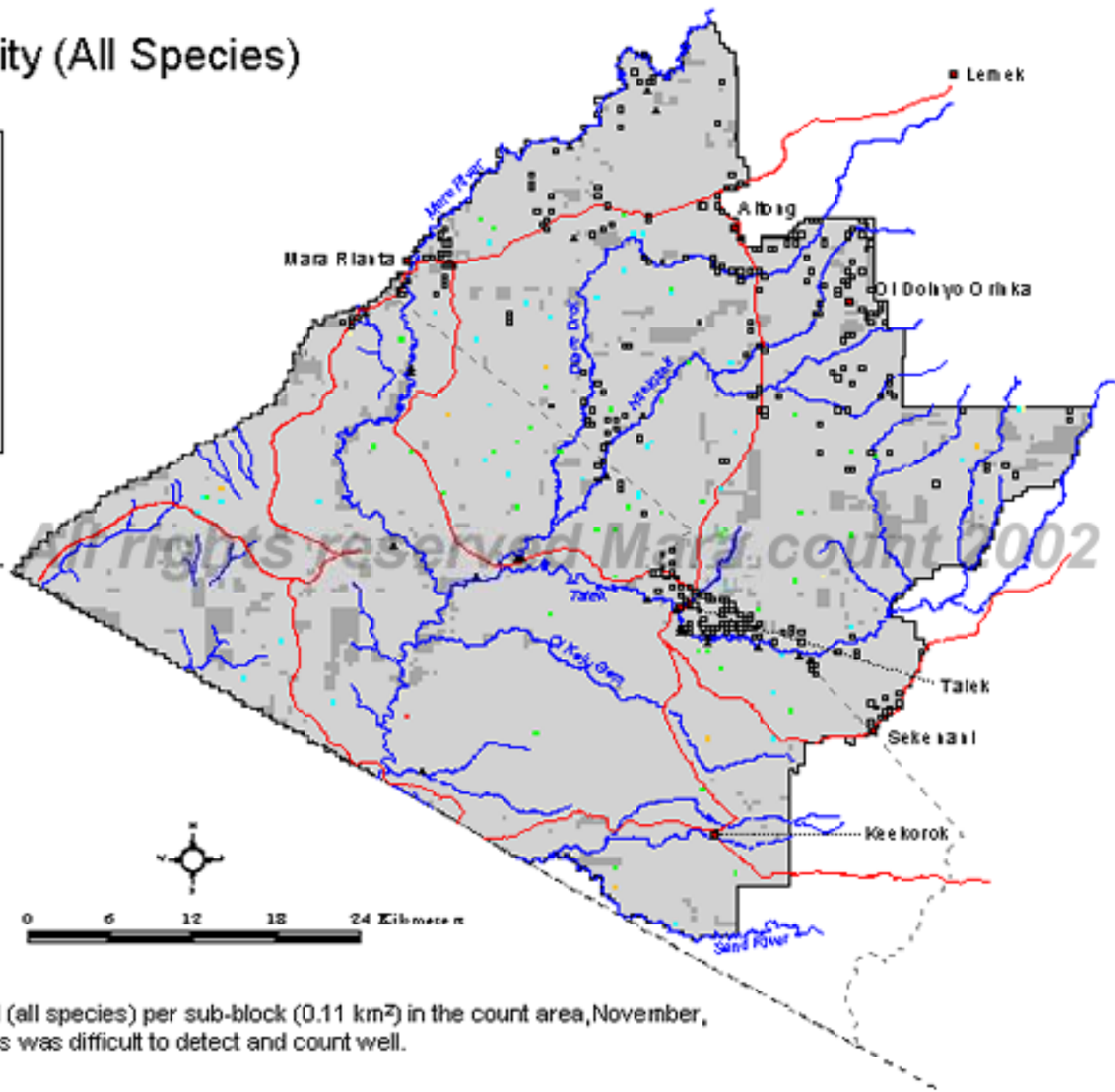
November 2002



Legend

No./0.11km²

- 0
- 1
- 2
- 3
- 4
- 6
- Not sampled (bush, inaccessible)
- Revenue boundary
- Mara county boundary
- International boundary
- Roads
- Rivers
- Towns
- Bomas
- Lodges



Map 63. Number of jackal (all species) per sub-block (0.11 km²) in the count area, November, 2002. * = species was difficult to detect and count well.