

* Spotted Hyena Density

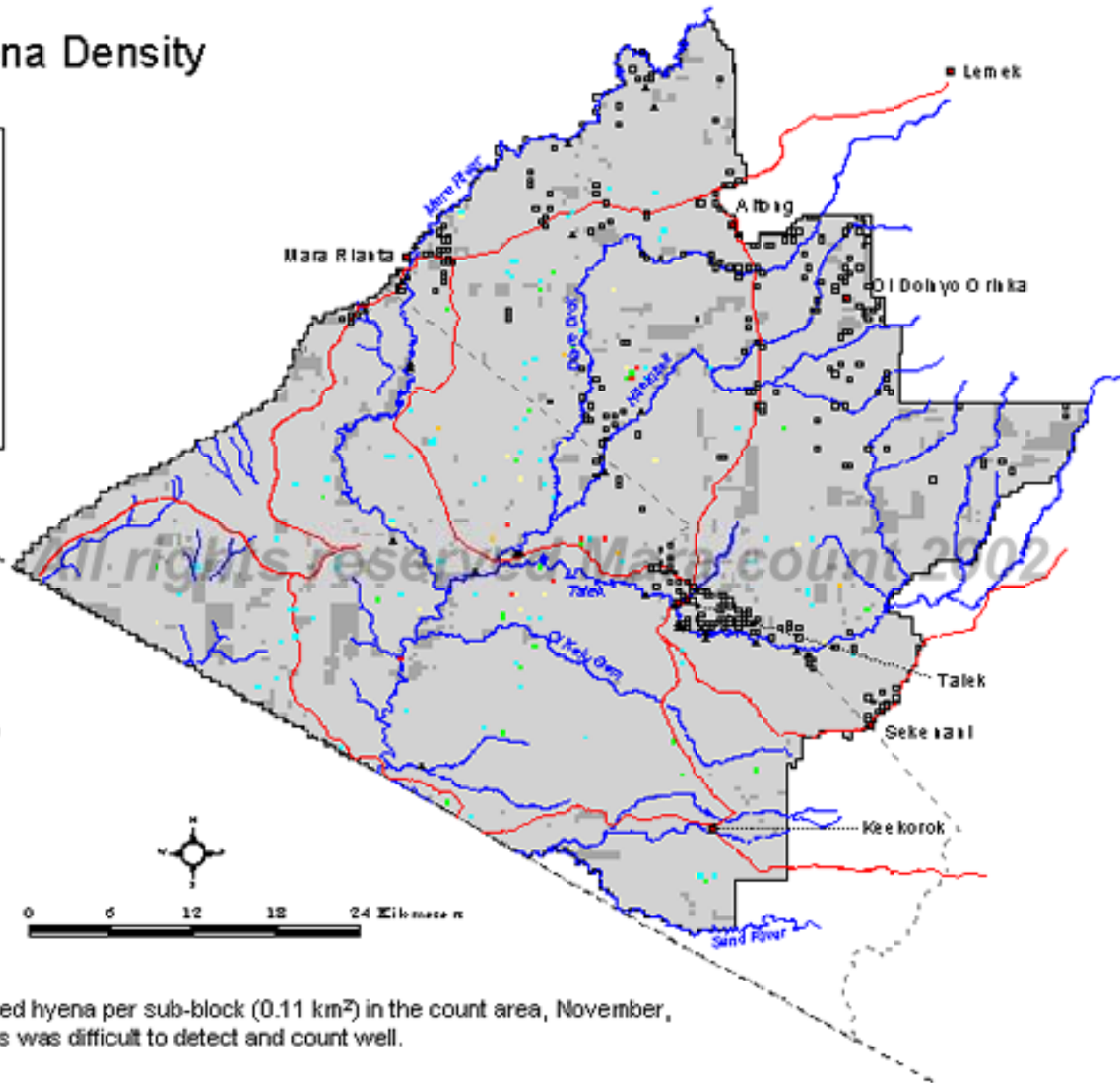
November 2002



Legend

No./0.11km²

- 0
- 1
- 2
- 3
- 4
- 5-11
- Not sampled (push, inaccessible)
- Reserve boundary
- Mara county boundary
- International boundary
- Roads
- Rivers
- Towns
- Baras
- Lodges



Map 62. Number of spotted hyena per sub-block (0.11 km²) in the count area, November, 2002. * = species was difficult to detect and count well.