

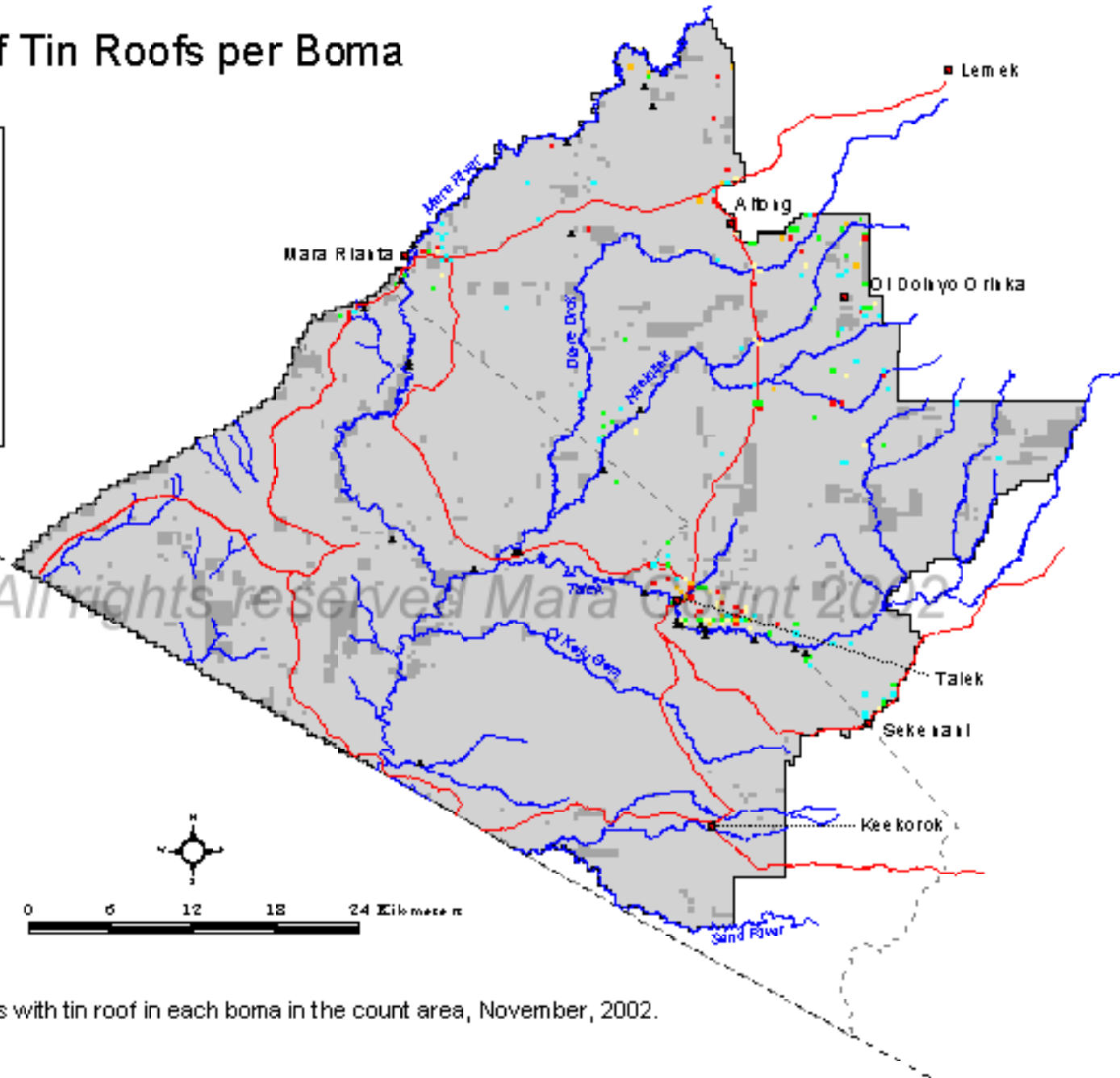
# Percentage of Tin Roofs per Boma

November 2002



## Legend

- 100.11km<sup>2</sup>
- 0
  - 1 - 20
  - 21 - 40
  - 41 - 80
  - 81 - 90
  - 91 - 100
  - Not sampled (bush, inaccessible)
  - Reserve boundary
  - Mara county boundary
  - International boundary
  - Roads
  - Rivers
  - Towns
  - Lodges



Map 6. Percentage of huts with tin roof in each boma in the count area, November, 2002.