

* Lion Density

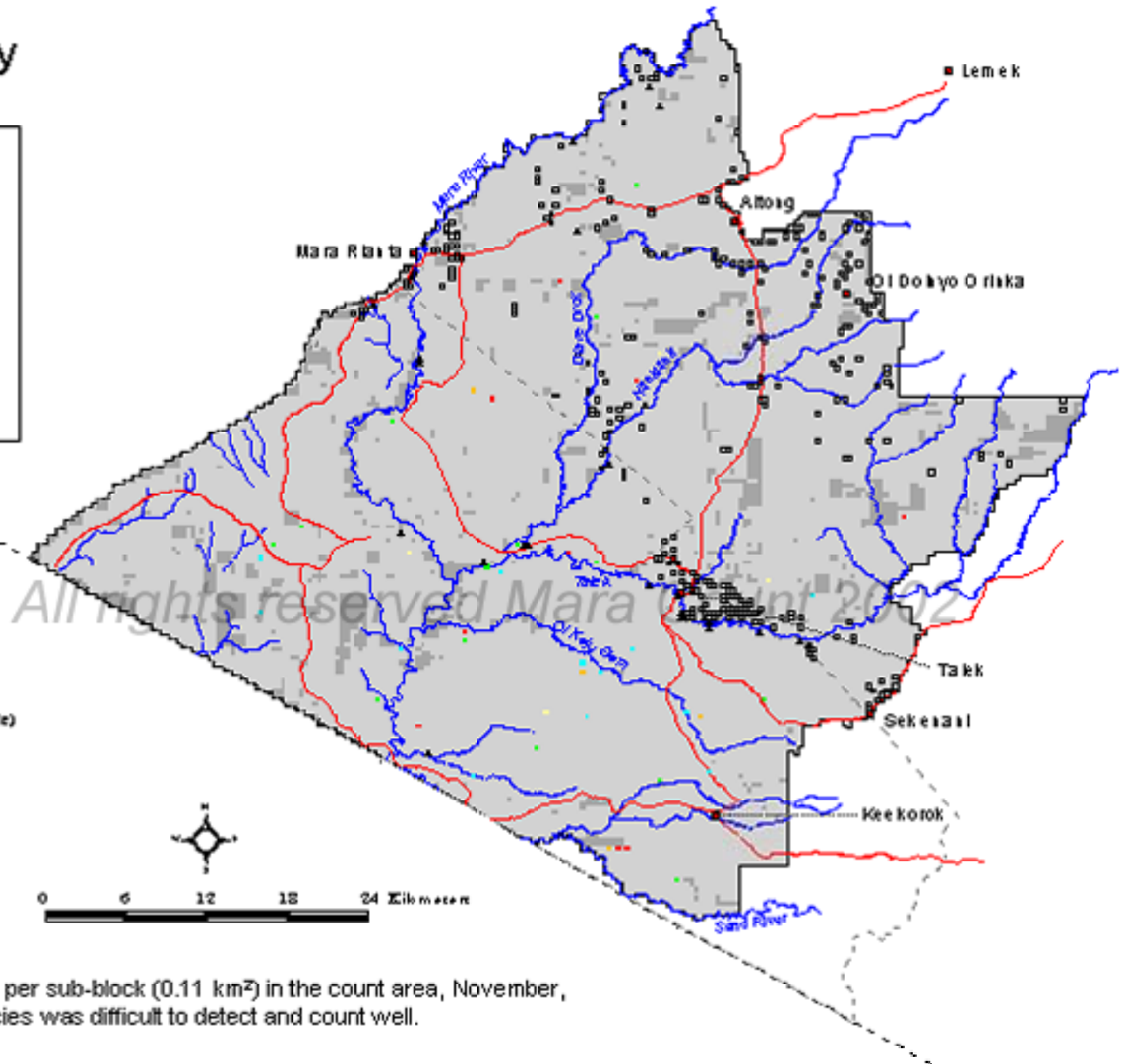
November 2002



Legend

No./0.11km²

- 0
- 1
- 2
- 3
- 4
- 6-18
- Not sampled (bush, inaccessible)
- Reserve boundary
- Mara county boundary
- International boundary
- Roads
- Rivers
- Towns
- Bomas
- Ledges



Map 58. Number of lion per sub-block (0.11 km²) in the count area, November, 2002. * = species was difficult to detect and count well.