

# \* Kirk's Dik-dik Density

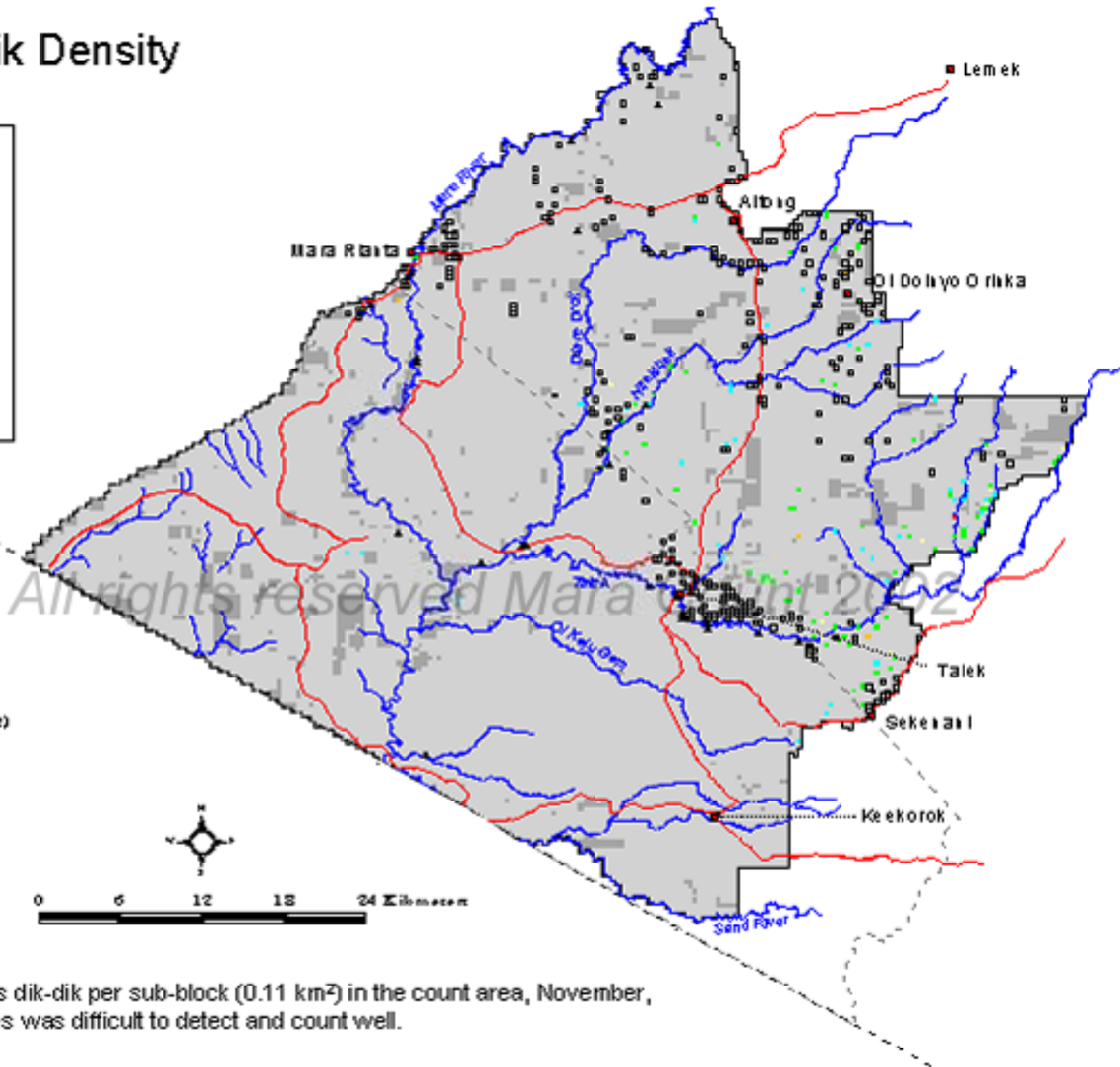
November 2002



## Legend

No./0.11km<sup>2</sup>

- 0
- 1
- 2
- 3
- 4
- 6-8
- Not sampled (bush, inaccessible)
- Reserve boundary
- Mara county boundary
- International boundary
- Roads
- Rivers
- Towns
- Bomas
- Ledges



Map 57. Number of Kirk's dik-dik per sub-block (0.11 km<sup>2</sup>) in the count area, November, 2002. \* = species was difficult to detect and count well.