

* Eastern Bushbuck Density

November 2002



Legend

No./0.11km²

0

1

2

3

4

6-8

Not sampled (brush, inaccessible)

Reserve boundary

Mara county boundary

International boundary

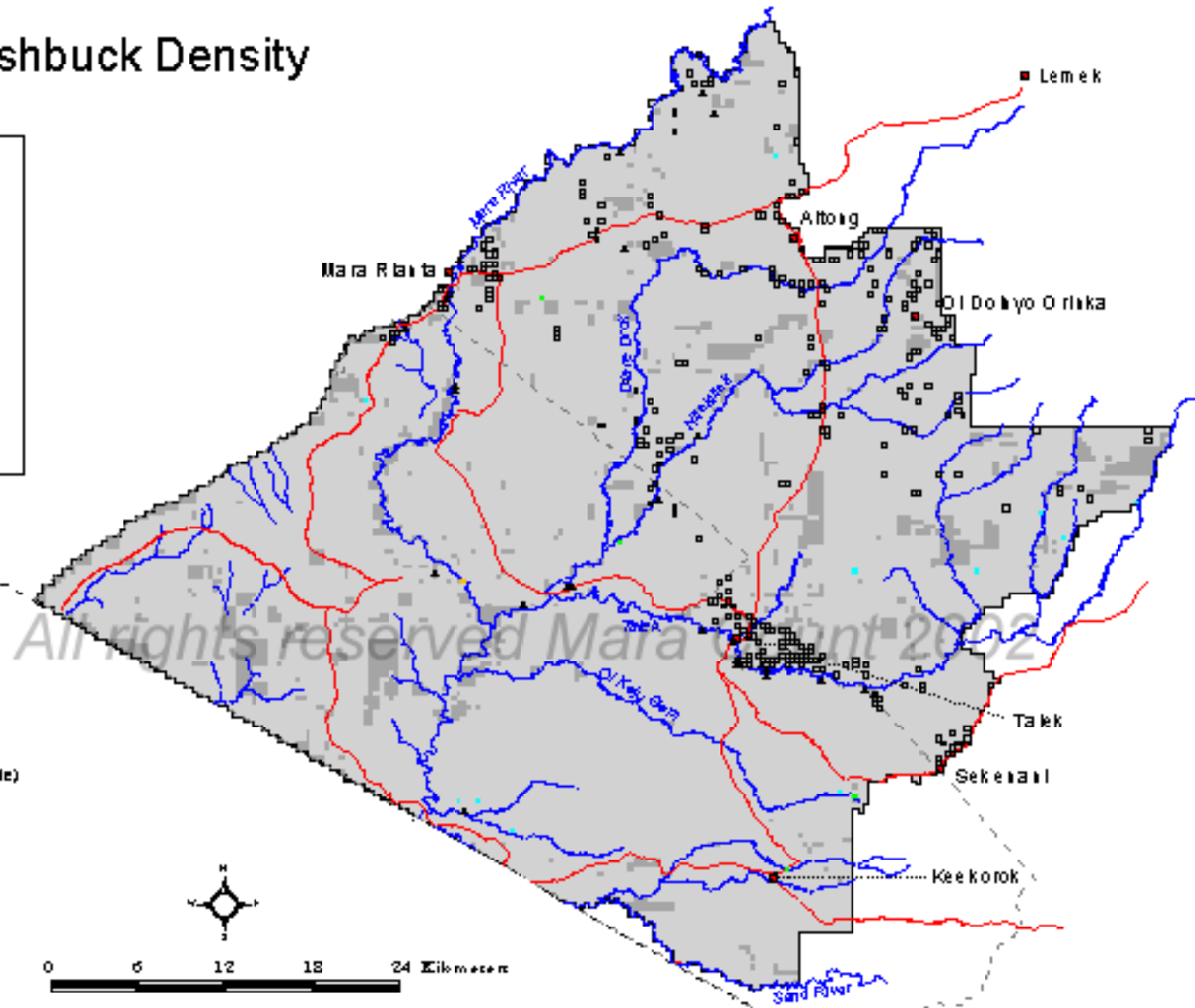
Roads

Rivers

Towns

Bomas

Lodges



Map 51. Number of Eastern bushbuck per sub-block (0.11 km²) in the count area, November, 2002. * = species was difficult to detect and count well.