

# Impala Density

November 2002

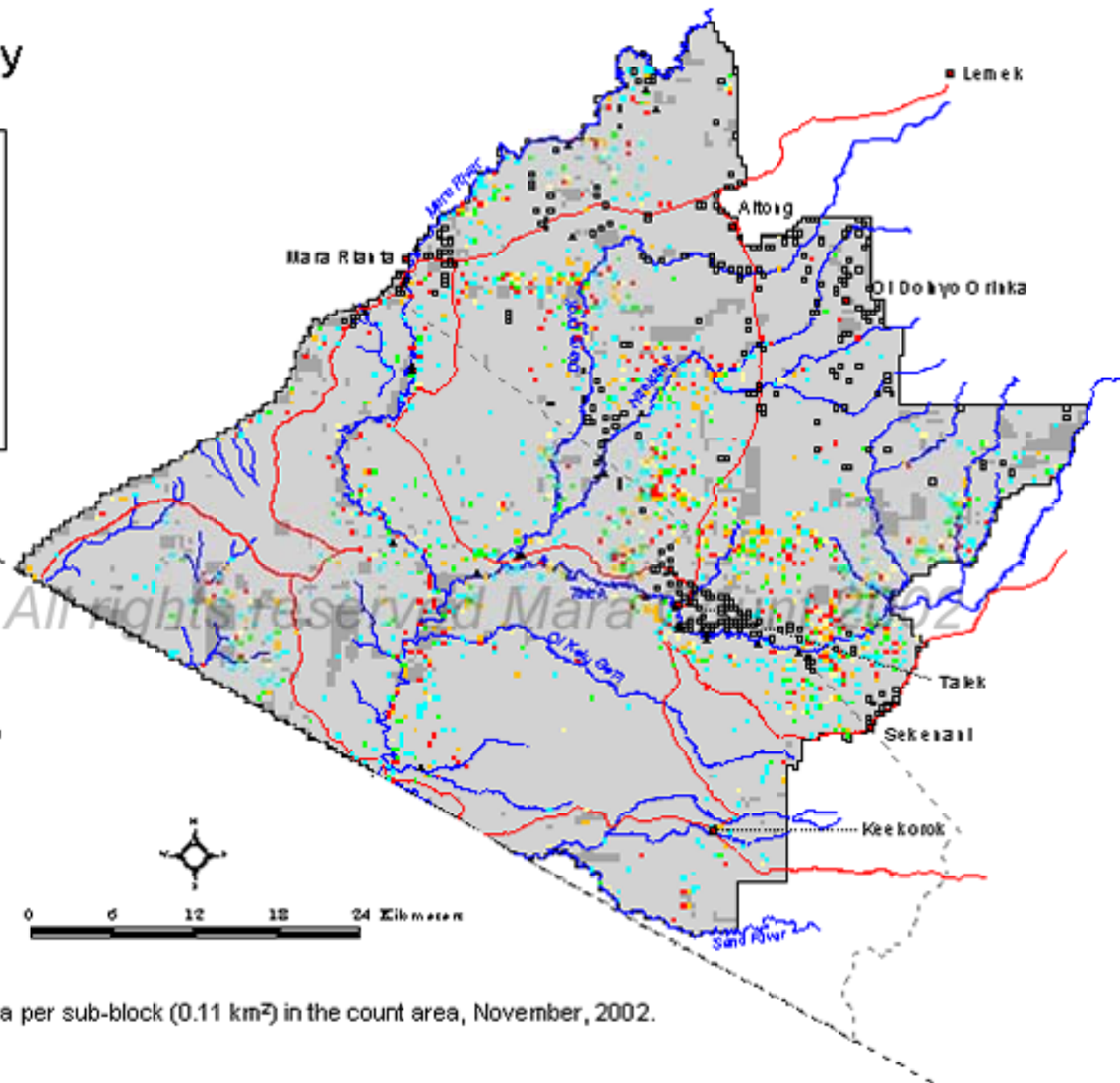


## Legend

No./0.11 km<sup>2</sup>



- Not sampled (bush, inaccessible)
- Reserve boundary
- Mara county boundary
- Intertribal boundary
- Roads
- Rivers
- Towns
- Baras
- Ledges



Map 50. Number of impala per sub-block (0.11 km<sup>2</sup>) in the count area, November, 2002.