

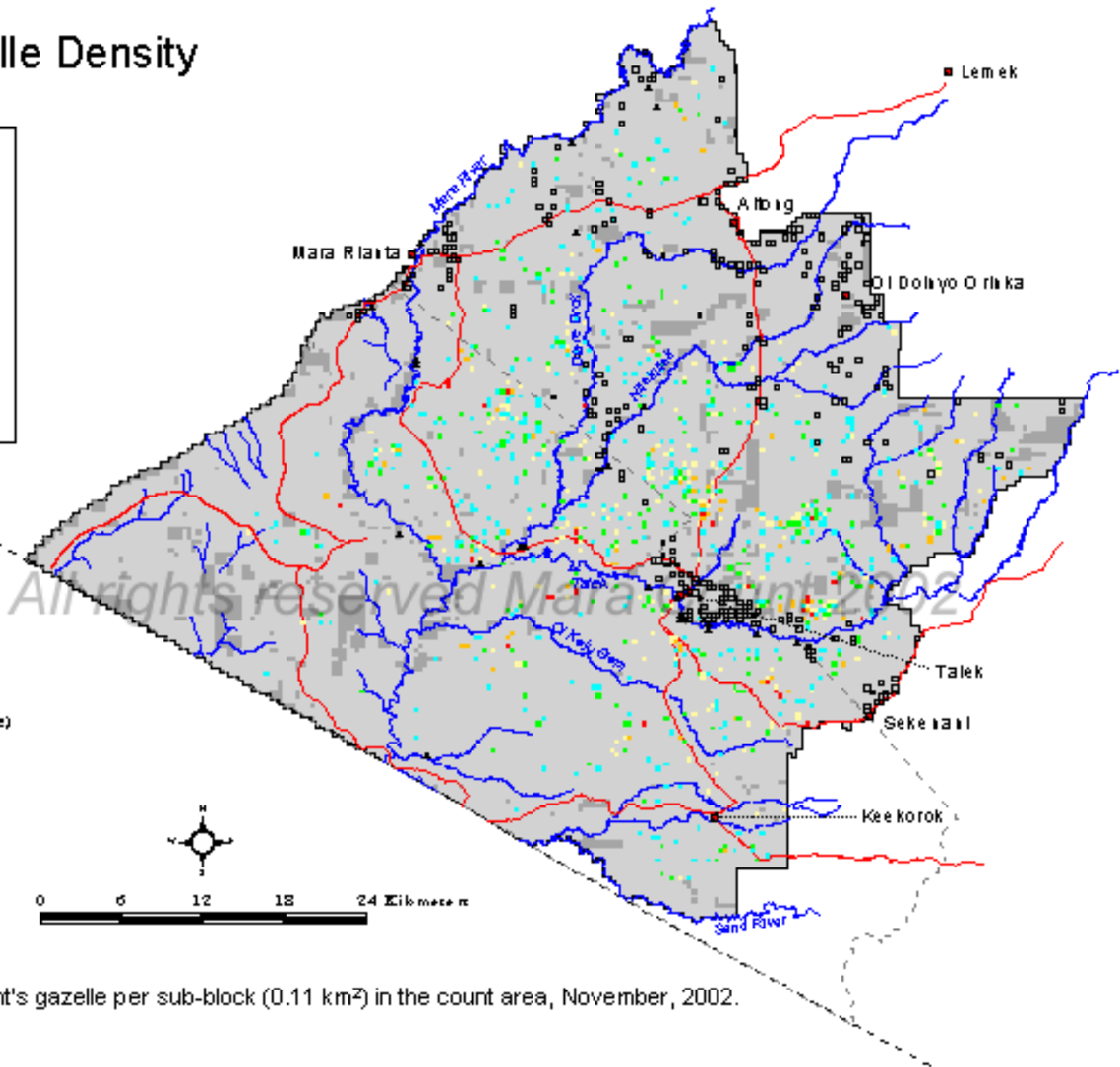
# Grant's Gazelle Density

November 2002



## Legend

- Nov. 0.11km<sup>2</sup>
- 0
  - 1-2
  - 3-6
  - 8-10
  - 11-20
  - 21-18
  - Not sampled (bush, inaccessible)
  - Reserve boundary
  - Mara county boundary
  - International boundary
  - Roads
  - Rivers
  - Towns
  - Bomas
  - Lodges



Map 49. Number of Grant's gazelle per sub-block (0.11 km<sup>2</sup>) in the count area, November, 2002.