

# African Elephant Density

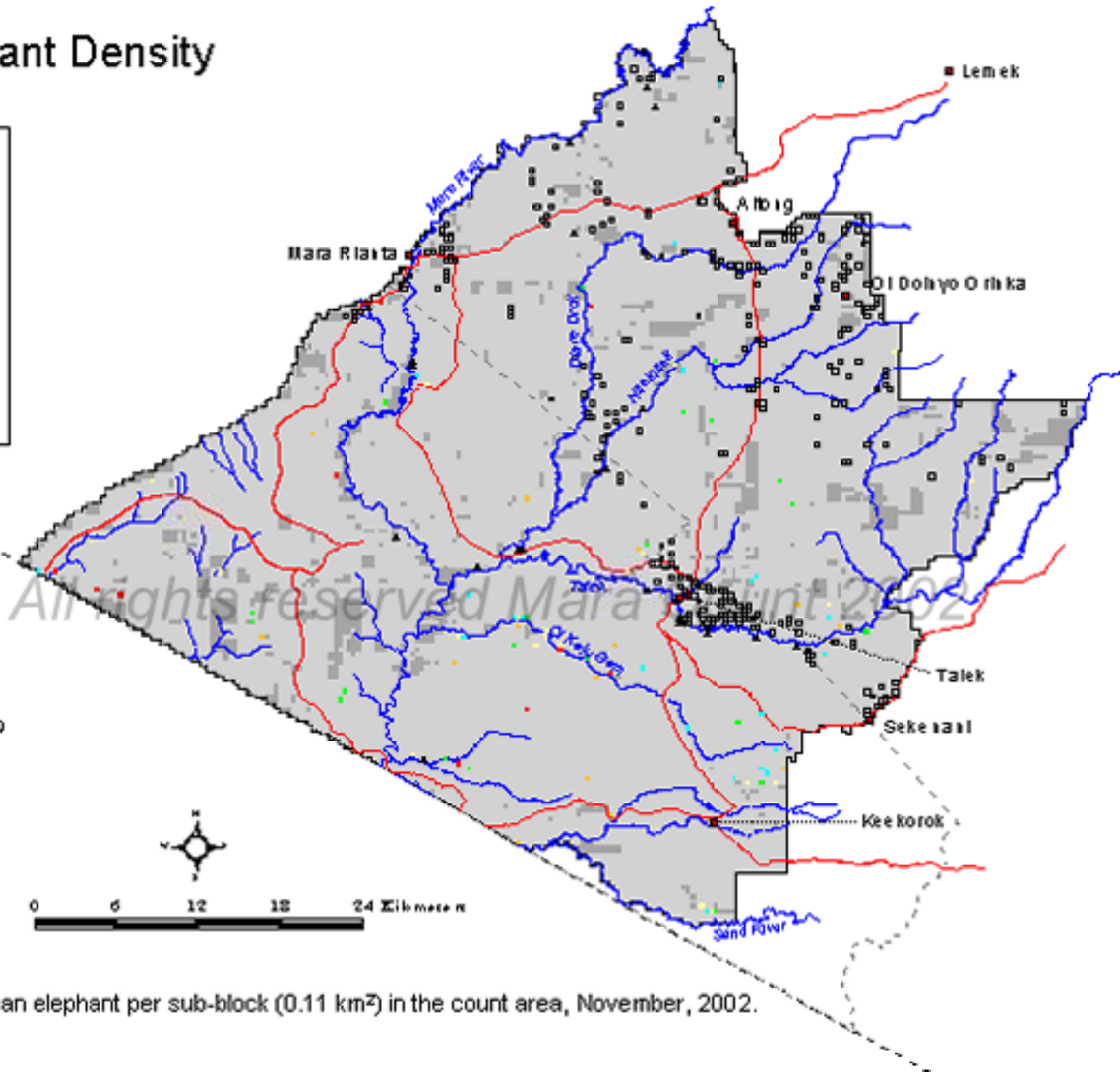
November 2002



## Legend

No./0.11km<sup>2</sup>

- 0
- 1-2
- 3-6
- 8-10
- 11-20
- 21-62
- Not sampled (rushed, inaccessible)
- Reserve boundary
- Mara county boundary
- International boundary
- Roads
- Rivers
- Towns
- Bomas
- Lodges



Map 47. Number of African elephant per sub-block (0.11 km<sup>2</sup>) in the count area, November, 2002.