

# Thomson's Gazelle Density

November 2002



## Legend

No./0.11km<sup>2</sup>



Grey: Not sampled (rush, inaccessible)

Dashed line: Reserve boundary

Thick dashed line: Maracount boundary

Dotted line: International boundary

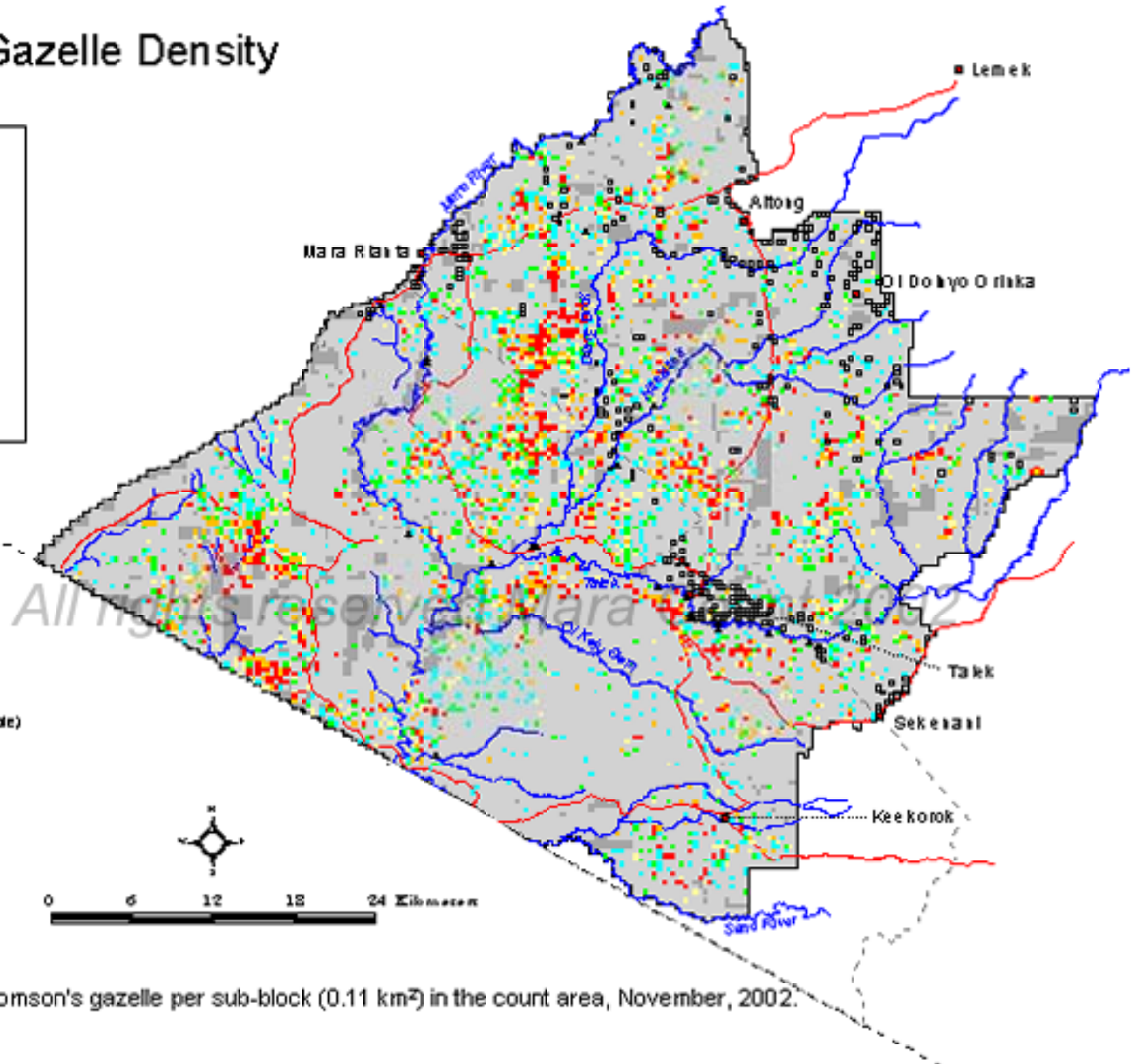
Red line: Roads

Blue line: Rivers

Red square: Towns

White square: Bonas

White triangle: Lodges



Map 45. Number of Thomson's gazelle per sub-block (0.11 km<sup>2</sup>) in the court area, November, 2002.