

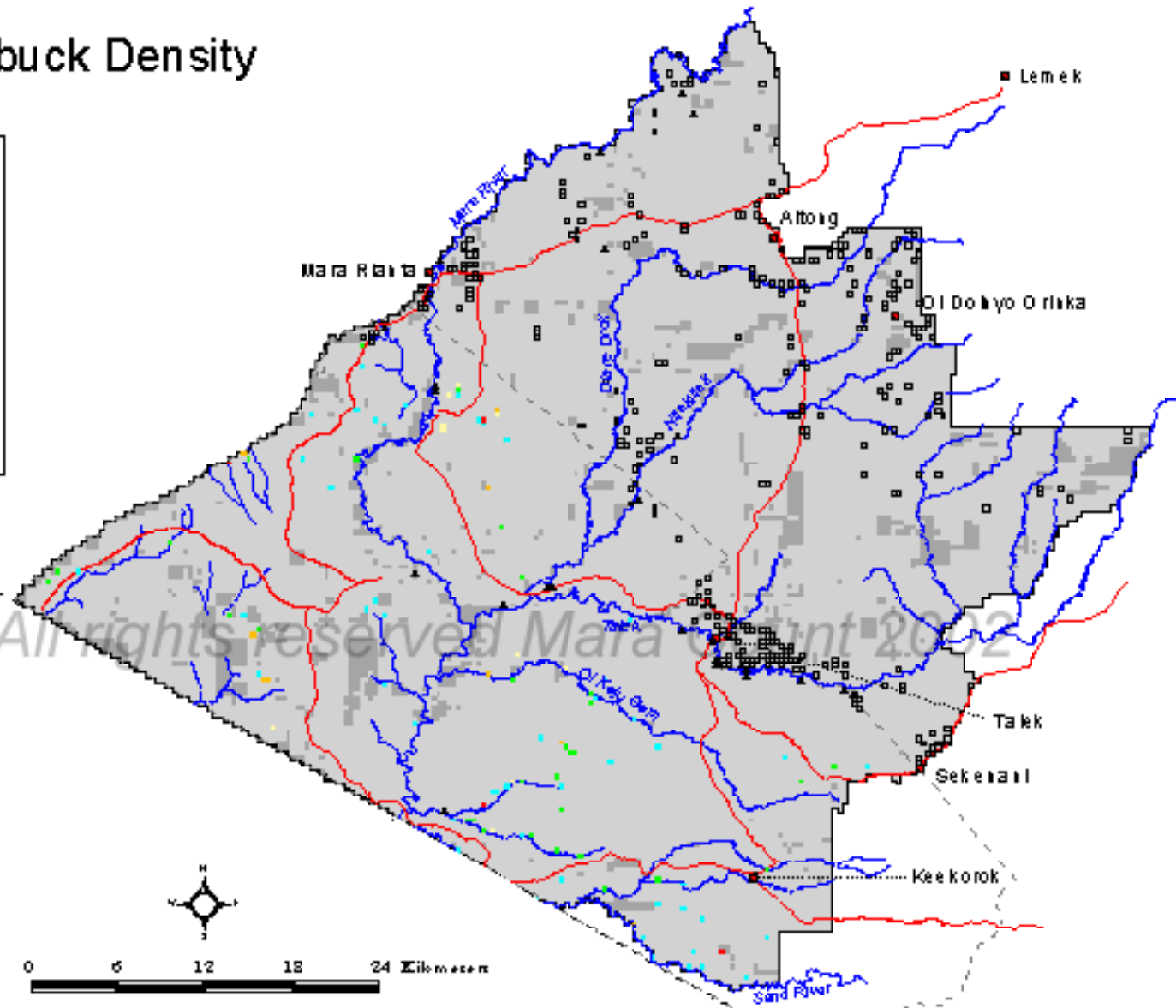
# \* Bohor Reedbuck Density

November 2002



## Legend

- No./0.11km<sup>2</sup>
- 0
  - 1
  - 2
  - 3
  - 4
  - 6-8
  - Not sampled (brush, inaccessible)
  - Reserve boundary
  - Mara county boundary
  - International boundary
  - Roads
  - Rivers
  - Towns
  - Bomas
  - Lodges



Map 44. Number of Bohor reedbuck per sub-block (0.11 km<sup>2</sup>) in the count area, November, 2002. \* = species was difficult to detect and count well.