

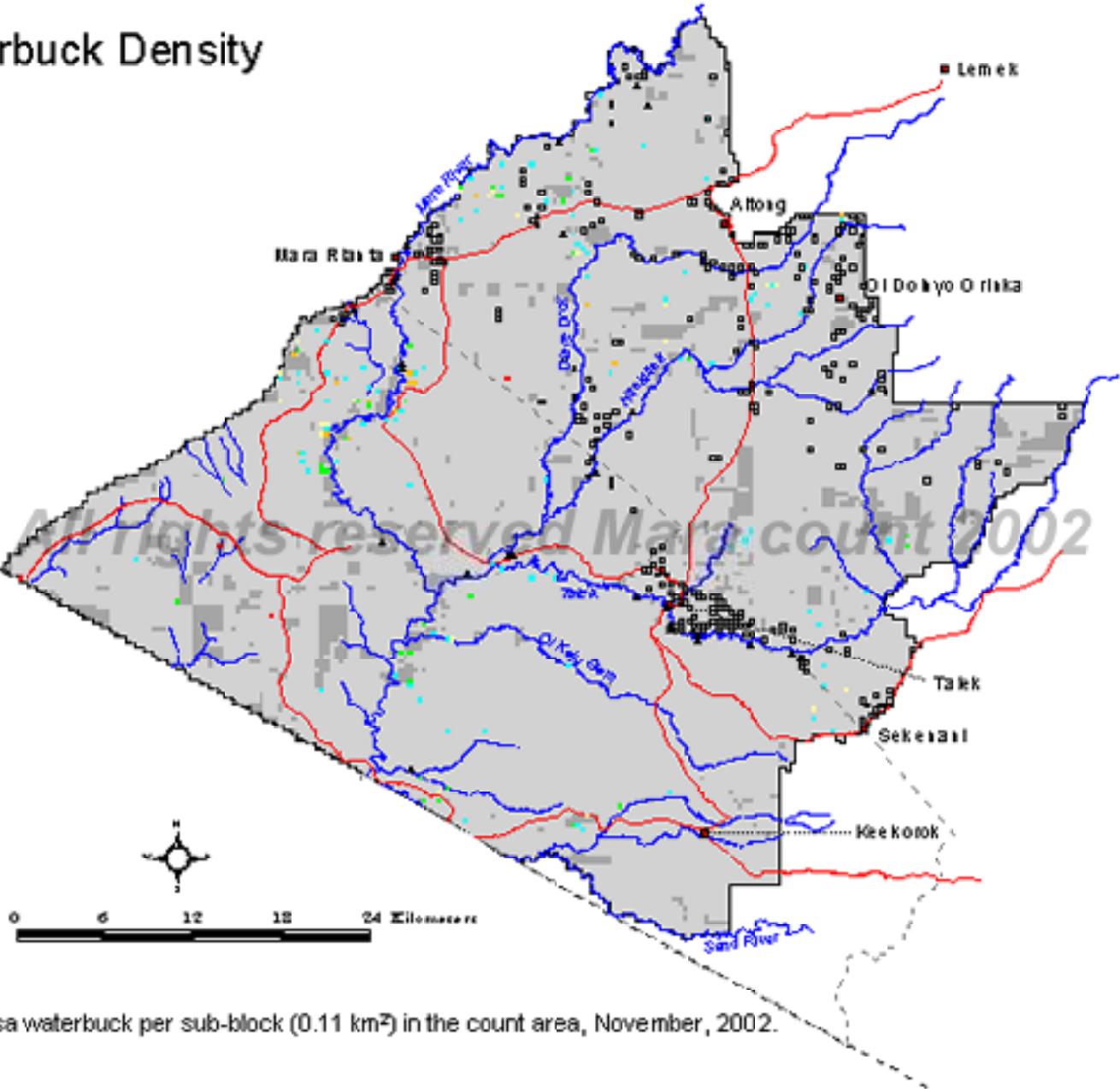
Defassa Waterbuck Density

November 2002



Legend
No./0.11km²

- 0
- 1-2
- 3-6
- 8-10
- 11-20
- 21-45
- Not sampled (bush, treeless site)
- Reserve boundary
- Mara county boundary
- Intertribal boundary
- Roads
- Rivers
- Towns
- Baras
- Ledges



Map 39. Number of Defassa waterbuck per sub-block (0.11 km²) in the count area, November, 2002.