

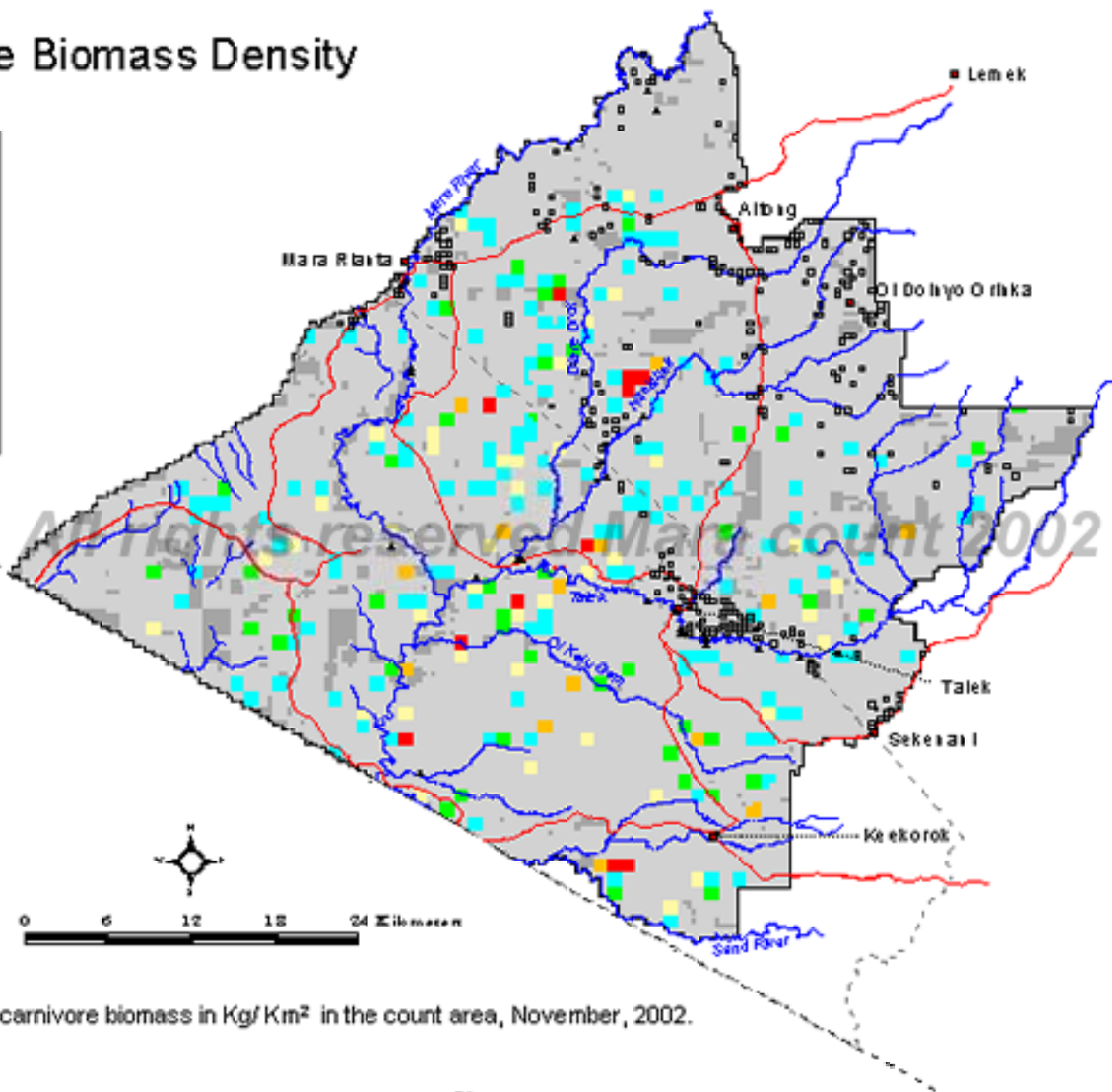
Wild Carnivore Biomass Density

November 2002



Legend

- Kg/Km²**
- 0
 - 1 - 60
 - 61 - 100
 - 101 - 200
 - 201 - 400
 - 401 - 1,000
 - Not sampled (bush, inaccessible)
 - Reserve boundary
 - Mara county boundary
 - International boundary
 - Roads
 - Rivers
 - Towns
 - Bomas
 - Lodges



Map 32. Aggregated wild carnivore biomass in Kg/Km² in the count area, November, 2002.