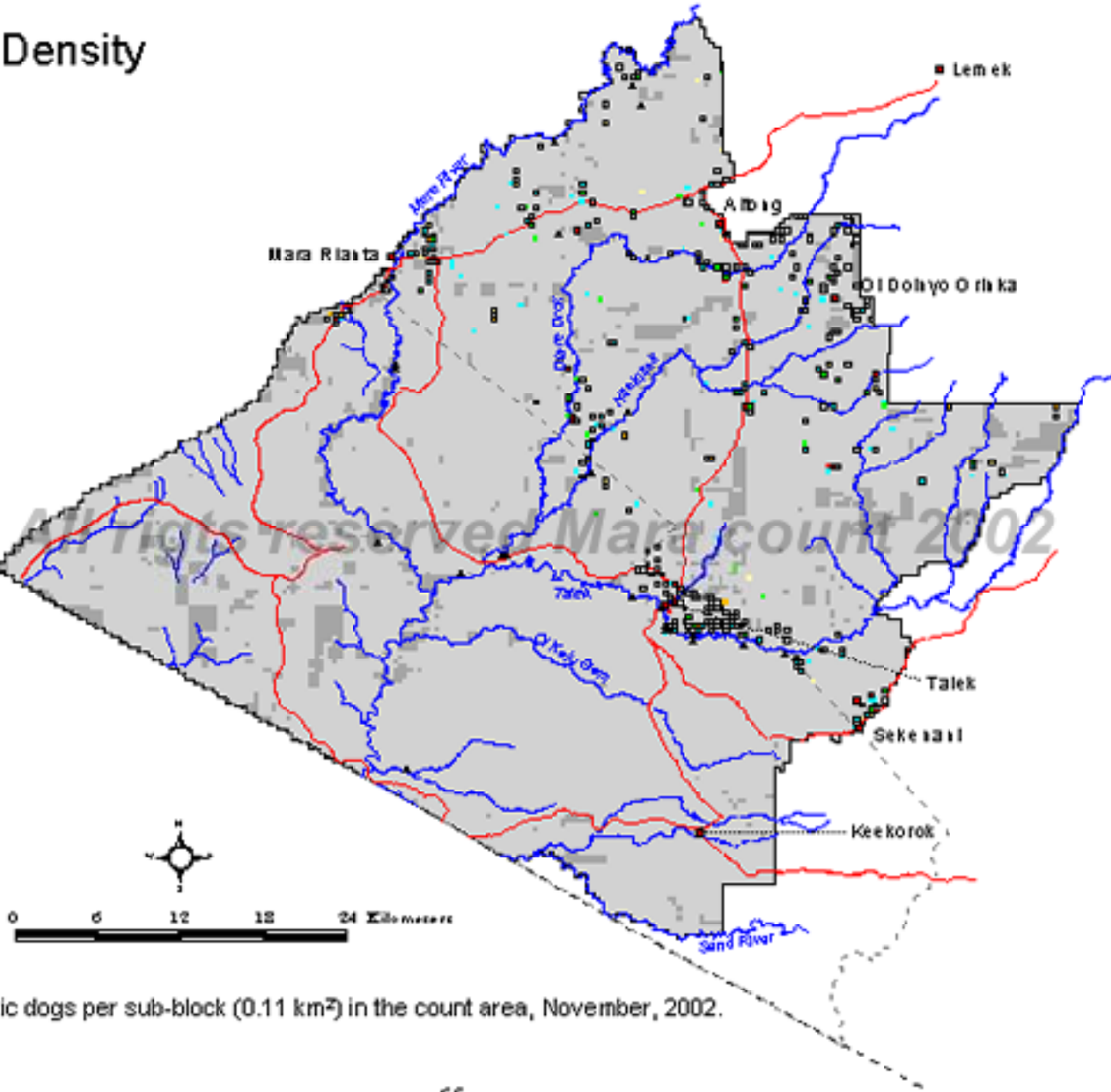


Domestic Dog Density

November 2002



- Legend**
No./0.11km²
- 0
 - 1
 - 2
 - 3
 - 4
 - 5-8
 - Not sampled (Bush/Inaccessible)
 - Reserve boundary
 - Mara county boundary
 - International boundary
 - Roads
 - Rivers
 - Towns
 - Bomas
 - Lodges



Map 29. Number of domestic dogs per sub-block (0.11 km²) in the count area, November, 2002.