

Tree Percentage Cover

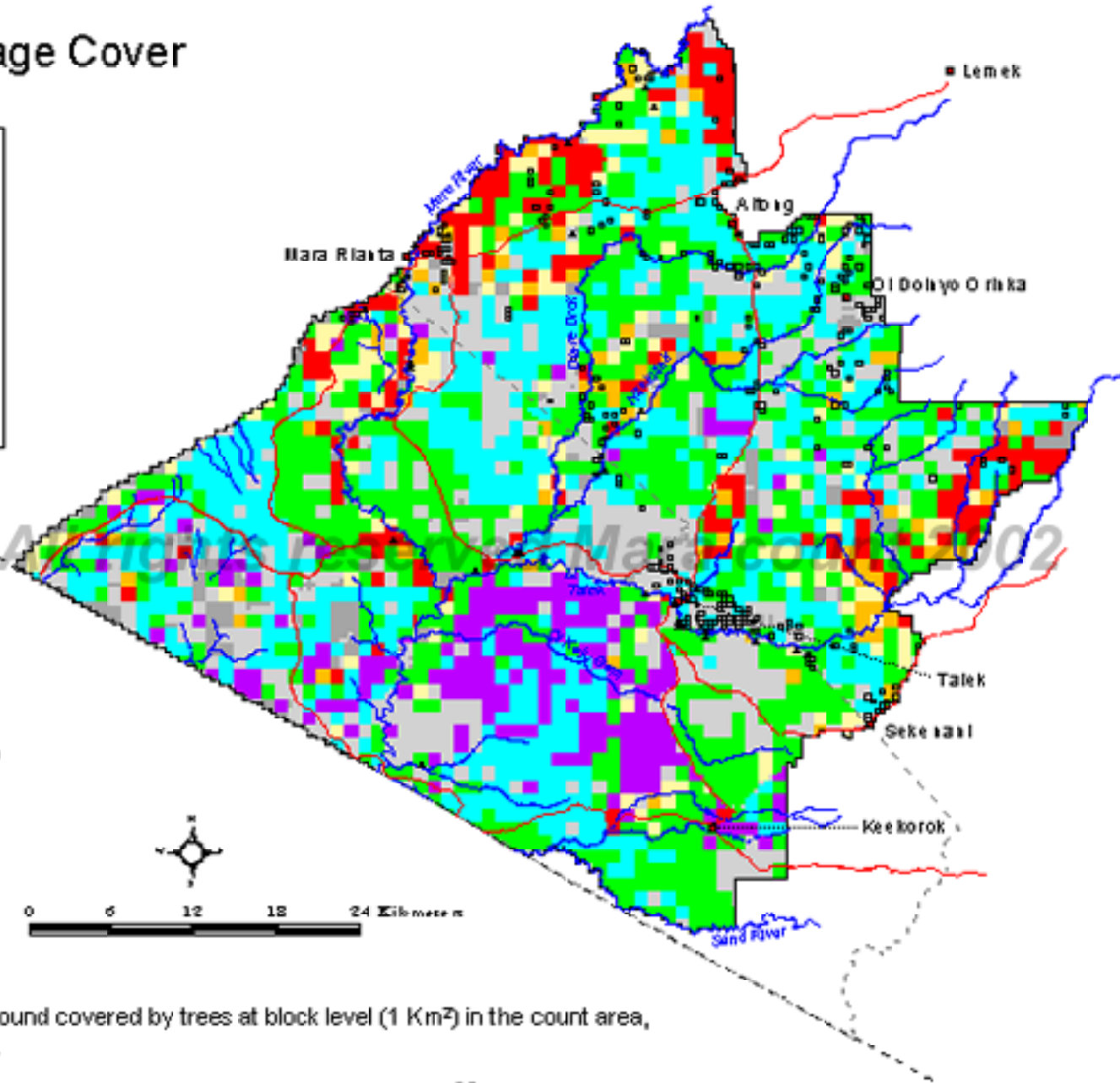
November 2002



Legend

Percentage cover

- No trees
- < 1
- 1 - 6
- 6 - 16
- 16 - 26
- 26 - 80
- Block without data
- Not sampled (bush, inaccessible)
- Reserve boundary
- Mara county boundary
- International boundary
- Roads
- Rivers
- Towns
- Bomas
- Lodges



Map 23. Percentage of ground covered by trees at block level (1 Km²) in the count area, November, 2002.