

Shrub Colour

November 2002



Legend

Percentage green

No shrubs

0 - 20

21 - 40

41 - 60

61 - 80

81 - 100

Block without data

Not sampled (bush, inaccessible)

Reserve boundary

Mara county boundary

International boundary

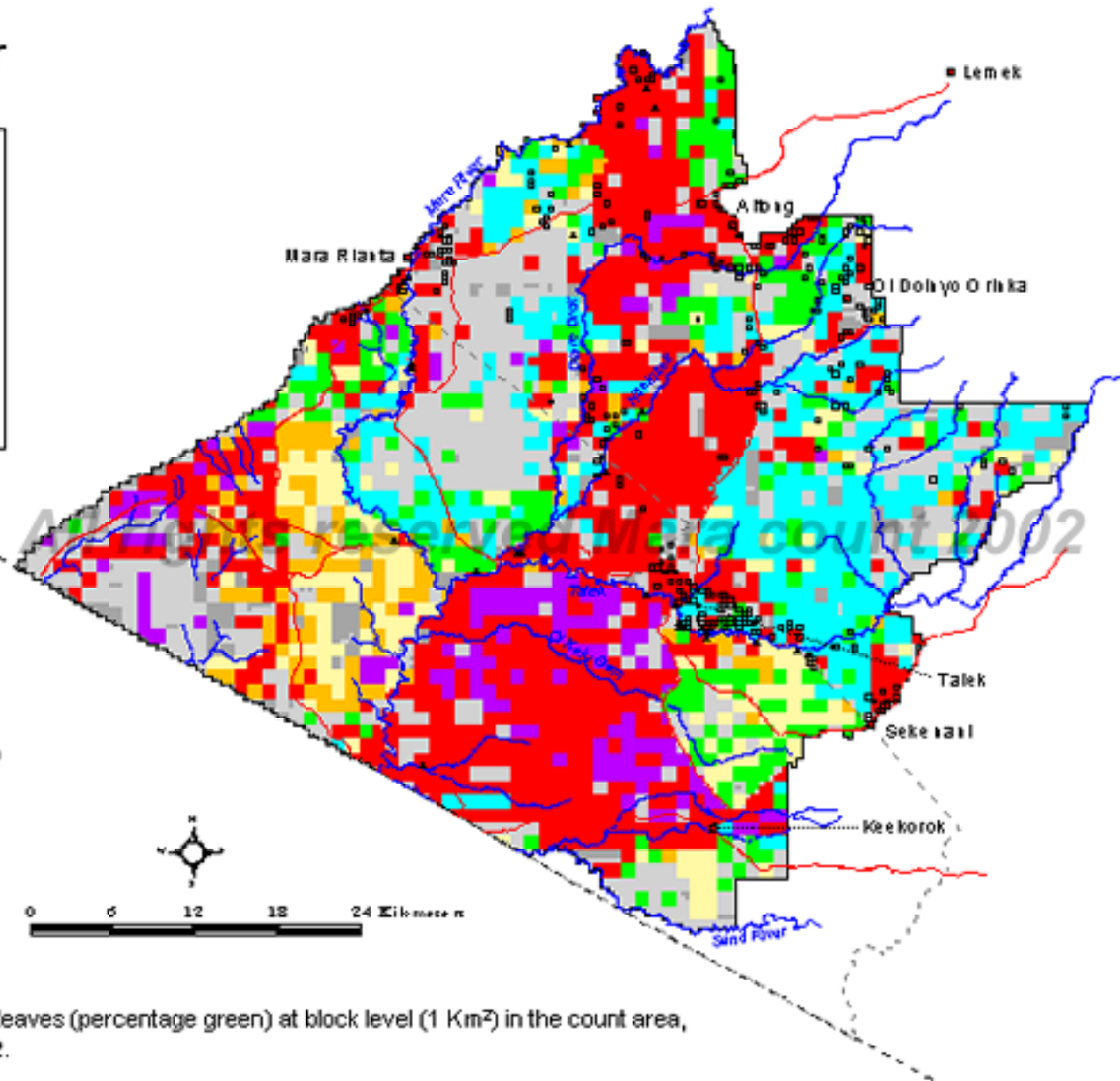
Roads

Rivers

Towns

Baras

Lodges



Map 22. Colour of shrub leaves (percentage green) at block level (1 Km²) in the count area, November, 2002.