

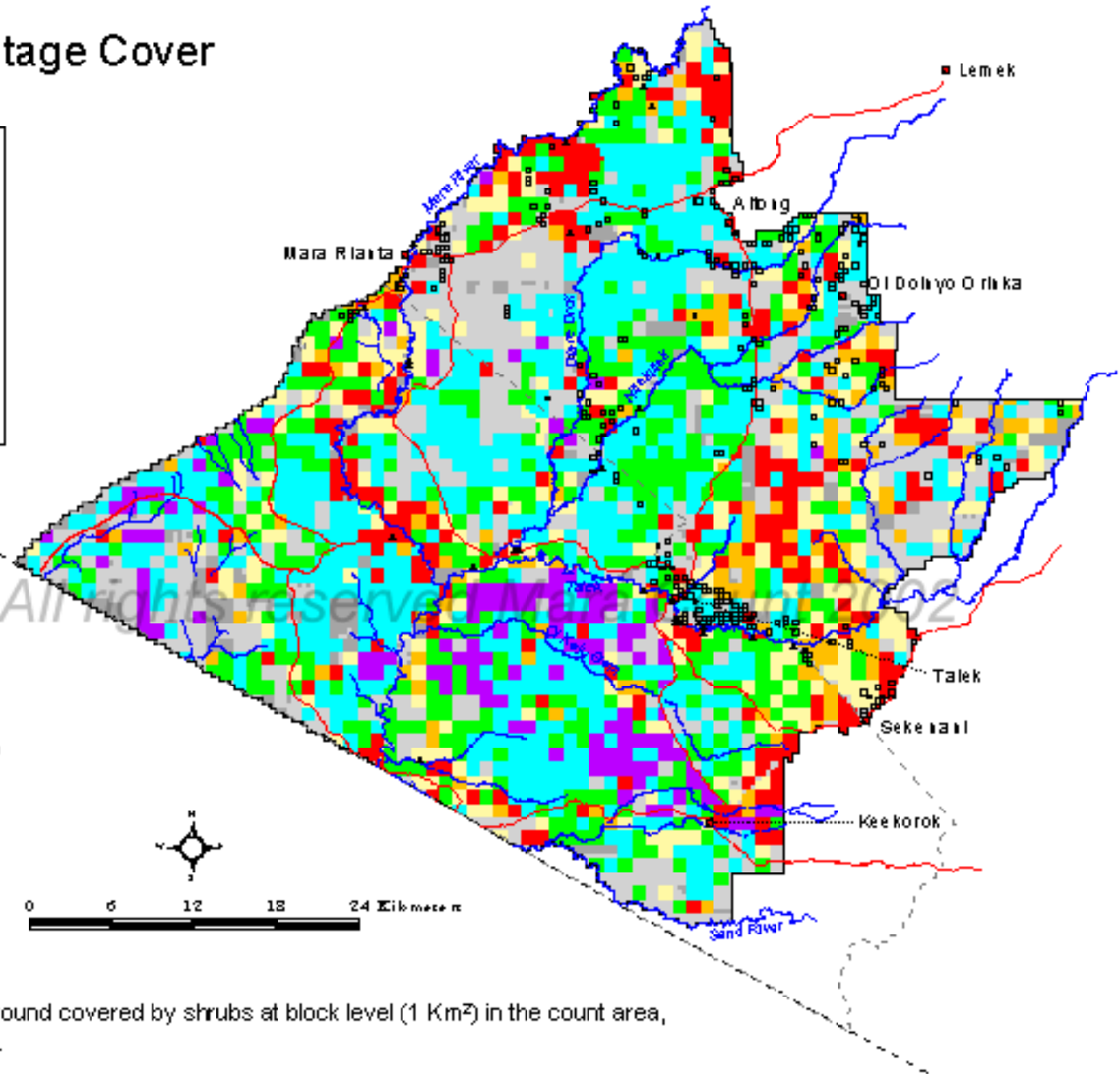
Shrub Percentage Cover

November 2002



Legend

- Percentage cover
- No shrubs
 - < 1
 - 1 - 6
 - 8 - 16
 - 18 - 26
 - > 26
 - Blank without data
 - Not sampled (brush, inaccessible)
 - Reserve boundary
 - Mara county boundary
 - International boundary
 - Roads
 - Rivers
 - Towns
 - Bomas
 - Lodges



Map 20. Percentage of ground covered by shrubs at block level (1 Km²) in the count area, November, 2002.