

# Grass Percentage Cover

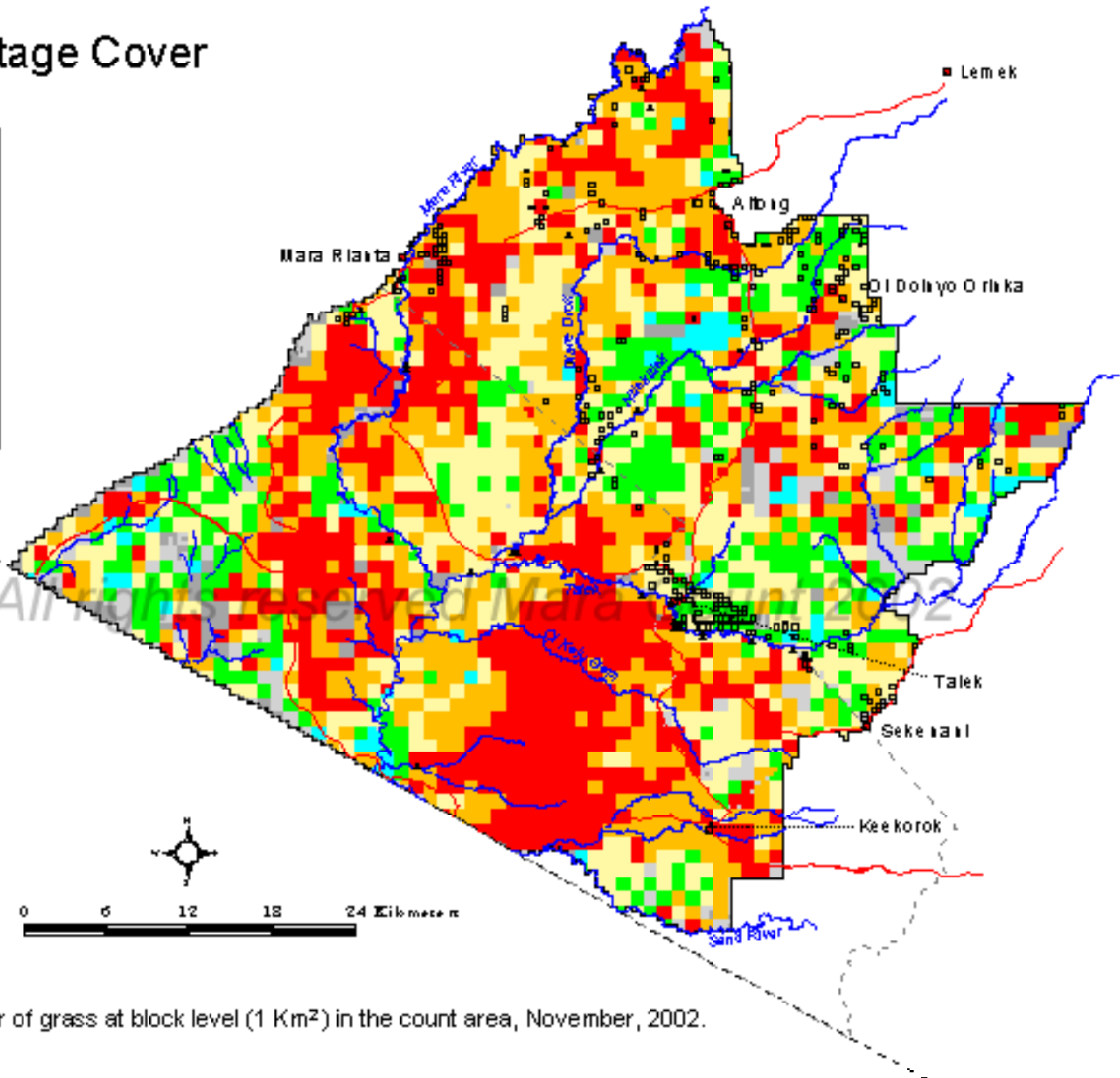
November 2002



## Legend

Percentage cover

- 0 - 20
- 21 - 40
- 41 - 60
- 61 - 80
- 81 - 100
- Block without data
- Not sampled (bush, inaccessible)
- Reserve boundary
- Mara county boundary
- International boundary
- Roads
- Rivers
- Towns
- Bomas
- Lodges



Map 17. Percentage cover of grass at block level (1 Km<sup>2</sup>) in the count area, November, 2002.